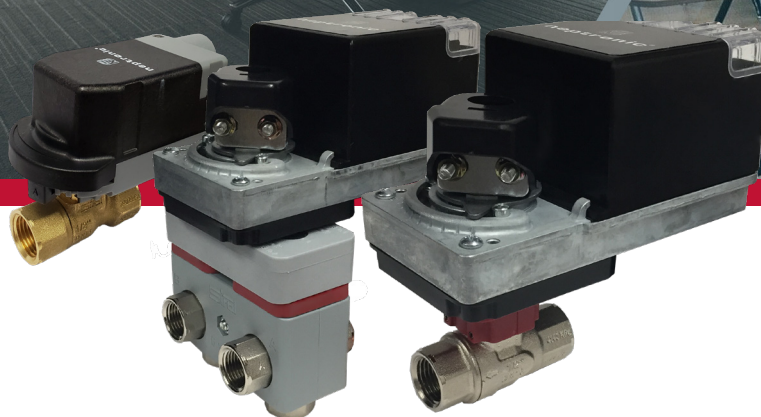


Ball Valves Brochure



neptronic®

■ Zone Ball Valves

Neptronic's compact 2 and 3-way zone ball valves are available as ½ in. and ¾ in. NPT, BSP and sweat. Depending on your applications needs, they can be combined with nine different Neptronic actuators with or without electric fail safe. This ensures optimal reliability adapted to your needs. Rotation CW, CCW, as well as direct and reverse acting can also be selected with a jumper.



Main Features

- No tools required for assembly
- Body rating 360 PSI
- Temperature range 0° to 212°F (-18°C to 100°C)
- Floating ball technology
- Chrome-plated ball
- Forged brass body
- Self-cleaning ball
- High close-off pressure 80 PSI
- Zero leakage
- Unidirectional flow
- Rotation jumper selectable
- Minimal differential pressure impact on torque
- Actuators are On/Off, floating and modulating (2-10Vdc)
- Actuators come with FT6 cables and ½ in. BX conduit connectors

Actuators Selection:

Without Electronic Failsafe:

YT000: 24V, On/Off, Floating

YT300: 100-240V, On/Off, Floating

YM000: 24V, Modulating

TM005: 24V, Modulating, Feedback

With Electronic Failsafe:

YT060: 24V, On/Off

YT080: 24V, On/Off, auxiliary switch

YT360: 100-240V, On/Off

YM060: 24V, Modulating

TM065: 24V, Modulating, Feedback

**** For ½ in. 3-Way valves Cv 5.62 and ¾ in. 3-Way valves Cv 11 only
no other Cv available with On/Off actuators.**

Applications

- Water, glycol 60%
- Fan coil units
- Unit ventilators
- VAV reheat coils

Zone Ball Valves

Models 2-Way NPT Valves

Model	Inch	DN mm	Cv Range	Kv Range
ZVA0002YP1	1/2	15 mm	0.2	0.17
ZVA0004YP1	1/2	15 mm	0.4	0.3
ZVA0006YP1	1/2	15 mm	0.6	0.5
ZVA0008YP1	1/2	15 mm	0.8	0.7
ZVA0012YP1	1/2	15 mm	1.2	1
ZVA0014YP1	1/2	15 mm	1.4	1.2
ZVA0024YP1	1/2	15 mm	2.4	2.06
ZVA0034YP1	1/2	15 mm	3.4	2.93
ZVA0048YP1	1/2	15 mm	4.8	4.23
ZVA0056YP1	1/2	15mm	5,62	4.84
ZVB0005YP1	3/4	20mm	0.5	0.43
ZVB0010YP1	3/4	20mm	1.0	0.86
ZVB0015YP1	3/4	20mm	1.5	1.30
ZVB0020YP1	3/4	20mm	2	1.72
ZVB0025YP1	3/4	20mm	2.5	2.15
ZVB0035YP1	3/4	20mm	3.5	3.00
ZVB0050YP1	3/4	20 mm	5	4.3
ZVB0068YP1	3/4	20mm	6.8	5.86
ZVB0087YP1	3/4	20mm	8.7	7.4
ZVB0111YP1	3/4	20mm	11	9.48

Models 3-Way NPT Valves (Mixing/Diverting)

Model	Close-Off Pressure	Inch	DN mm	Cv Range	Kv Range
ZTA0002YP1	80 PSI	1/2	15mm	0.2	0.17
ZTA0004YP1	80 PSI	1/2	15mm	0.4	0.3
ZTA0006YP1	80 PSI	1/2	15mm	0.6	0.5
ZTA0008YP1	80 PSI	1/2	15mm	0.8	0.7
ZTA0012YP1	80 PSI	1/2	15mm	1.2	1
ZTA0014YP1	80 PSI	1/2	15mm	1.4	1.2
ZTA0024YP1	80 PSI	1/2	15mm	2.4	2.06
ZTA0034YP1	80 PSI	1/2	15mm	3.4	2,93
ZTA0048YP1	80 PSI	1/2	15mm	4.8	4.23
ZTA0056YP1	80 PSI	1/2	15mm	5.62	4.84
ZTB0005YP1	80 PSI	3/4	20mm	5	0.43
ZTB0010YP1	80 PSI	3/4	20mm	1.0	0.86
ZTB0015YP1	80 PSI	3/4	20mm	1.5	1.30
ZTB0020YP1	80 PSI	3/4	20mm	2	1.72
ZTB0025YP1	80 PSI	3/4	20mm	2.5	2.15
ZTB0035YP1	80 PSI	3/4	20mm	3.5	3.00
ZTB0050YP1	80 PSI	3/4	20mm	5	4.3
ZTB0068YP1	80 PSI	3/4	20mm	6.8	5.86
ZTB0087YP1	80 PSI	3/4	20mm	8.7	7.4
ZTB0111YP1	80 PSI	3/4	20mm	11	9.48

Globe Zone Valve

Neptronic's 2-way globe zone valves are available as ½ in., ¾ in. and 1 in. NPT valves. These compact valves can be easily combined with different VT and VM actuators with or without fail safe based on your application.

They include field-replaceable and interchangeable cartridges and are built with anti-dezincification bronze to facilitate maintenance. They are also available with selectable rotation DIP switch.



Main Features

- No tools required for assembly
- Body rating ANSI Class 250
- Small dimensions allow for easy installation
- Field replaceable and interchangeable internal cartridges
- Minimum close-off pressure of 100 PSI
- Actuators are On/Off, floating and modulating (2-10Vdc)

Applications

- Water, Glycol 60%
- Fan Coil Units
- Unit Ventilators
- VAV Reheat Coils

Actuators Selection:

Without Electronic Fail Safe:

VT-XT000: 24V, On/Off, Floating

VM-XM000: 24V, Modulating (0-10 or 2-10Vdc)

With Electronic Fail Safe:

VM-XM060: 24V, On/Off, Floating

VM-XM060: 24V, Modulating

Globe Zone Valve

Models 2-Way NPT

2-Way NPT	Inch	DN mm	Cv Range	Kv Range	Close Off Pressure
T2A0005EB1	1/2	15mm	0.5	0.43	100 PSI
T2A0010EB1		15mm	1	0.86	100 PSI
T2A0015EB1		15mm	1.5	1.30	100 PSI
T2A0020EB1		15mm	2	1.72	100 PSI
T2A0025EB1		15mm	2.5	2.15	100 PSI
T2A0030EB1		15mm	3	2.58	100 PSI
T2A0035EB1		15mm	3.5	3.00	100PS1
T2B0010EB1	3/4	20mm	1	0.86	100 PSI
T2B0015EB1		20mm	1.5	1.30	100 PSI
T2B0020EB1		20mm	2	1.30	100 PSI
T2B0025EB1		20mm	2.5	1.72	100 PSI
T2B0030EB1		20mm	3	2.15	100 PSI
T2B0035EB1		20mm	3.5	3.00	100PS1
T2B0045EB1		20mm	4.5	3.87	100PS1
T2C0060EB1	1	25mm	6	5.16	100 PSI
T2C0064EB1		25 mm	6.4	5.50	100 PSI
T2C0080EB1		25mm	8	6.90	100 PSI
T2CB0090EB1		25mm	9	7.75	100 PSI

6-Way Valves

Combining the benefits of the Neptronic actuators and a modular 6-way valve, this powerful duo is a solution offering two equal percentage characterized flow sequences for (heating and cooling). This allows for modulating control of each sequence using a single 6-way valve and a single actuator, hence simplifying the entire process.

These valves only require one actuator to control water heating and cooling. This allows you to reduce installation time, helping you save on labour costs.



Main Features

- Compatible with B, S and L series modulating actuators
- Widest range of Cv values in the industry
- 90 second runtime
- 200 PSI close-off pressure
- Temperature range 0°F to 212°F [-18°C to 100°C]
- Heating and cooling with a single coil and a single actuator
- Reduced wiring
- NPT connections
- Simplified control with a single actuator
- Two equal percentage characterized flow sequences

Applications

- Water, glycol 60%
- Chilled beam
- Fan coil units
- Unit ventilators

Models

Size	6-Way NPT	Cv	Cv (Seq 2)	Kv	Kv (Seq 2)
3/4" (DN20)	B6B047-047	4.7	4.7	4	4
	B6B047-074	4.7	7.4	4	6.4
	B6B047-100	4.7	10	4	8.6
	B6B047-140	4.7	14	4	12
	B6B074-047	7.4	4.7	6.4	4
	B6B074-074	7.4	7.4	6.4	6.4
	B6B074-100	7.4	10	6.4	8.6
	B6B074-140	7.4	14	6.4	12
	B6B100-047	10	4.7	8.6	4
	B6B100-074	10	7.4	8.6	6.4
	B6B100-100	10	10	8.6	8.6
	B6B100-140	10	14	8.6	12
	B6B140-047	14	4.7	12	4
	B6B140-074	14	7.4	12	6.4
	B6B140-100	14	10	12	8.6
	B6B140-140	14	14	12	12
1" (DN25)	B6C074-074	7.4	7.4	6.4	6.4
	B6C074-100	7.4	10	6.4	8.6
	B6C074-190	7.4	19	6.4	16
	B6C100-074	10	7.4	8.6	6.4
	B6C100-100	10	10	8.6	8.6
	B6C100-190	10	19	8.6	16
	B6C190-074	19	7.4	16	6.4
	B6C190-100	19	10	16	8.6
	B6C190-190	19	19	16	16

6-Way Valves

Models

Size	6-Way NPT	Cv	Cv (Seq 2)	Kv	Kv (Seq 2)
½" (DN15)	B6A003-003	0.3	0.3	0.26	0.26
	B6A003-004	0.3	0.46	0.26	0.4
	B6A003-008	0.3	0.8	0.26	0.7
	B6A003-012	0.3	1.2	0.26	1
	B6A003-019	0.3	1.9	0.26	1.6
	B6A004-003	0.46	0.3	0.4	0.26
	B6A004-004	0.46	0.46	0.4	0.4
	B6A004-008	0.46	0.8	0.4	0.7
	B6A004-012	0.46	1.2	0.4	1
	B6A004-019	0.46	1.9	0.4	1.6
	B6A008-003	0.8	0.3	0.7	0.26
	B6A008-004	0.8	0.46	0.7	0.4
	B6A008-008	0.8	0.8	0.7	0.7
	B6A008-012	0.8	1.2	0.7	1
	B6A008-019	0.8	1.9	0.7	1.6
	B6A012-003	1.2	0.3	1	0.26
	B6A012-004	1.2	0.46	1	0.4
	B6A012-008	1.2	0.8	1	0.7
	B6A012-012	1.2	1.2	1	1
	B6A012-019	1.2	1.9	1	1.6
	B6A019-003	1.9	0.3	1.6	0.26
	B6A019-004	1.9	0.46	1.6	0.4
	B6A019-008	1.9	0.8	1.6	0.7
	B6A019-012	1.9	1.2	1.6	1
	B6A019-019	1.9	1.9	1.6	1.6
	B6A030-004	3	0.46	2.6	0.4
	B6A030-008	3	0.8	2.6	0.7
	B6A030-012	3	1.2	2.6	1
	B6A030-019	3	1.9	2.6	1.6
	B6A030-047	3	4.7	2.6	4
	B6A030-074	3	7.4	2.6	6.4
	B6A047-047	4.7	4.7	4	4
	B6A047-074	4.7	7.4	4	6.4
	B6A074-074	7.4	7.4	6.4	6.4

■ Characterized Control Ball Valves

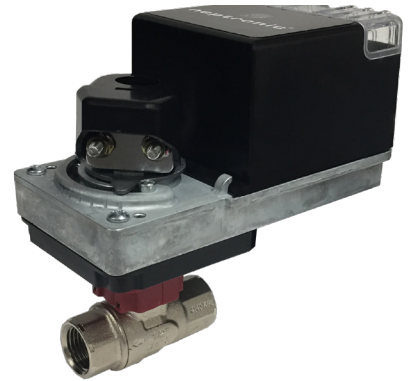
Neptronic's characterized control ball valves are designed with a brass disc insert to achieve a wide range of Cv options by offering a variety of disc shapes. Our 2 and 3-way valves are available in sizes ranging from ½ in. to 2 in. NPT. The 3-way valves can be either mixing or diverting to best match your applications' unique requirements.

Main Features

- Compatible with our D, B and L series actuators
- Water, glycol 60%
- 200 PSI close-off pressure
- Temperature range 0°F to 250°F (-18°C to 120°C)
- Body rating 400-600 PSI
- 2 or 3-way bubble tight zero linkage
- Brass nickel body, chrome-plated brass ball or stainless-steel ball
- Brass characterized disc
- Equal percentage
- Self-cleaning ball
- Blowout proof steam
- Floating seat design
- Control Signals: On/Off, floating and modulating

Applications

- Fan coil units
- Unit ventilators
- Heating cooling coils
- VAV reheat coils
- Air handlers



Characterized Control Ball Valves

Models 2-Way

Size	2-Way NPT	Cv	Kv
½" (DN15)	B2A0003PP1	0.3	0.26
	B2A0005PP1	0.46	0.4
	B2A0008PP1	0.8	0.7
	B2A0012PP1	1.2	1
	B2A0019PP1	1.9	2.6
	B2A0030PP1	3	4
	B2A0047PP1	4.7	6.4
	B2A0074PP1	7.4	8.6
	B2A0100PP1	10	14
	B2A0160PP1	16	4
¾" (DN20)	B2B0047PP1	4.7	4
	B2B0074PP1	7.4	6.4
	B2B0100PP1	10	8.8
	B2B0140PP1	14	12
	B2B0240PP1	24	21
1" (DN25)	B2C0074PP1	7.4	6.4
	B2C0100PP1	10	8.6
	B2C0190PP1	19	16
	B2C0300PP1	30	26
1¼" (DN32)	B2D0100PP1	10	8.6
	B2D0190PP1	19	16
	B2D0250PP1	25	22
	B2D0370PP1	37	32
½" (DN40)	B2E0190PP1	19	16
	B2E0290PP1	29	25
	B2E0370PP1	37	32
	B2E0460PP1	46	40
2" (DN50)	B2F0290PP1	29	25
	B2F0370PP1	37	32
	B2F0460PP1	46	40
	B2F0570PP1	57	49
	B2F0660PP1	66	57
	B2F0850PP1	85	74
	B2F1200PP1	120	104
	B2F2300PP1	230	199

Models 3-Way Mixing or Diverting

Size	3-Way NPT	Cv	Kv
½" (DN15)	B3A0004PS1	0.3	0.26
	B3A0005PS1	0.46	0.4
	B3A0008PS1	0.8	0.7
	B3A0012PS1	1.2	1
	B3A0019PS1	1.9	1.64
	B3A0030PS1	3	2.6
	B3A0047PS1	4.7	4
	B3A0074PS1	7.4	6.4
¾" (DN20)	B3B0047PS1	4.7	4
	B3B0074PS1	7.4	6.4
	B3B0140PS1	14	12
1" (DN25)	B3C0074PS1	7.4	8.4
	B3C0100PS1	10	8.6
	B3C0190PS1	19	16
1¼" (DN32)	B3D0100PS1	10	8.6
	B3D0190PS1	19	16
	B3D0290PS1	29	25
	B3D0350PS1	35	30
½" (DN40)	B3E0190PS1	19	16
	B3E0290PS1	29	25
	B3E0370PS1	37	32
2" (DN50)	B3F0290PS1	29	25
	B3F0370PS1	37	32
	B3F0460PS1	46	40
	B3F0570PS1	57	49
	B3F0660PS1	66	57
	B3F0850PS1	85	74

Contoured Control Ball Valves

Neptronic's contoured control ball valves can provide digital or analog control of hot and chilled water systems containing up to 50% glycol. Each unit is comprised of a rotary actuator and linkage assembly coupled to a valve body that offers positive close-off and low torque. The contoured valves are designed with an integral permanently attached glass-filled polymer insert to achieve a wide range of Cv options by offering a variety of orifices.

These actuated ball valves are available in 2-way sizes ½ in. to 3 in. NPT. As 3-way units, they can be mixing or diverting in sizes ranging from ½ to 2.5 in. NPT. They are compatible with our D and B series of actuators, with On/Off, floating and modulating control signals with or without electronic fail safe.



Main Features

- Body rating of 360 PSI
- Forge grass body
- Nickel plated brass or stainless-steel ball and stem
- 100-130 PSI close-off pressure for 2-way valves
- 50 PSI close-off pressure for 3-way valves
- Temperature range -22°F (-30°C) to 250°F (12°C)
- Glass polymer flow contoured insert
- 2-way full-ported valve with high Cv

Applications

- Water, glycol 50%
- Fan coil units
- Unit ventilators
- AHU heating and cooling coils
- Equal percentage

Contoured Control Ball Valves

Models 2-Way NPT

VALVE SIZE	Cv	Kv	VALVE MODEL PREFIX	CLOSE OFF PSI	A	B
					STANDARD NPT FEMALE	STANDARD EXTENSION
1/2	0.4	0.3	CP A0004YP1	130	2.37	2.40
1/2	0.7	0.6	CP A0007YP1	130	2.37	2.40
1/2	1.4	1.2	CP A0014YP1	130	2.37	2.40
1/2	2.6	2.2	CP A0026YP1	130	2.37	2.40
1/2	5	4	CP A0050YP1	130	2.37	2.40
3/4"	10	8	CP B0100YP1	130	2.64	2.52
1"	16	13	CP C0160YP1	100	3.05	2.62
1-1/4"	26	22	CP D0260YP1	100	3.60	2.88
1-1/2"	41	35	CP E0410YP1	100	3.70	3.36
2"	71	61	CP F0710YP1	100	4.41	3.57
2-1/2"	101	87	CP G1010YP1	100	4.70	3.57
3"	124	107	CP H1240YP1	100	5.02	3.57

Models 3-Way Mixing Diverting NPT

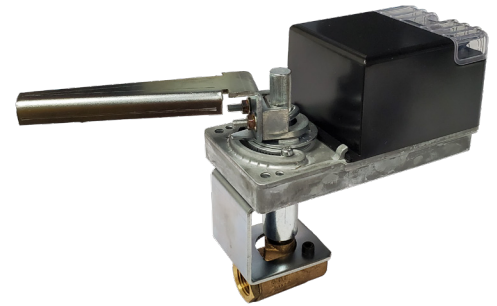
VALVE SIZE	Cv	Kv	VALVE MODEL PREFIX	CLOSE OFF PSI	A	B	C
1/2	0.3	0.2	ST A0003YP1	50	2.64	2.51	2.01
1/2	0.6	0.5	ST A0006YP1	50	2.64	2.51	2.01
1/2	1.0	0.8	ST A0010YP1	50	2.64	2.51	2.01
1/2	2.4	2	ST A0024YP1	50	2.64	2.51	2.01
1/2	4.3	3.7	ST A0043YP1	50	2.64	2.51	2.01
1/2"	8	6.9	ST A0080YP1	50	2.64	2.51	2.01
3/4"	3.8	3.2	ST B0038YP1	50	2.64	2.51	2.00
3/4"	12.6	10.9	ST B0126YP1	50	2.64	2.51	2.00
1"	8.6	7.4	ST C0086YP1	50	3.00	3.01	2.42
1"	22	19	ST C0220YP1	50	3.00	3.01	2.42
1-1/4"	12.7	10.9	ST D0127YP1	40	3.60	3.26	3.00
1-1/4"	34	29	ST D0340YP1	40	3.60	3.26	3.00
1-1/2"	23.5	20.3	ST E0235YP1	40	4.00	3.76	3.30
1-1/2"	61	52	ST E0610YP1	40	4.00	3.76	3.30
2"	38	32	ST F0380YP1	40	5.00	5.01	3.80
2"	108	93	ST F1080YP1	40	5.00	5.01	3.80
2-1/2"	74	64	ST G0740YP1	40	5.00	5.01	3.80
2-1/2"	99	85	ST G0990YP1	40	5.00	5.01	3.80

* All dimensions are in Inches

Industrial Ball Valves

Neptronic's industrial ball valves provide digital or analog control of hot water, chilled water containing up to 50% glycol or 15 PSI steam. The standard full port design is less restrictive, providing high flow characteristics with low pressure drops.

Valve sizes range from ½ in. to 3 in. with a maximum valve body rating of 600 PSIG for a 2-way, and 400 PSIG for a 3-way. These low profile, compact units can be installed with ease in the often tight, restricted areas found in unit ventilators, fan coils, terminal reheat coils and larger air handlers.



Main Features

- Compatible with our B, T and R series actuators
- Temperature range 0°F (-18°C) to 400°F (205°C)
- Control signals: On/Off, floating and modulating
- 2-Way equal percentage
- 2-Way 600 PSI body rating WOG
- Bronze body, stainless steel ball and stem
- 3-Way modified linear
- 3-Way 400 PSI body rating WOG

Applications

- Hot or chilled water
- Steam
- Large flow applications

Models 2-Way NPT

B Series 2 Way Valve Assembly	Size	Cv	Kv	Valve Model Prefix	Close off pc
	1/2"	2	1	SB A0020XS1	150
	1/2"	4	3	SB A0040XS1	150
	1/2"	15	13	FP A0150XS1	150
	3/4"	30	25	SB B0300XS1	150
T Series 2 Way Valve Assembly	3/4"	51	44	FP B0510XS1	300
	1"	43	37	SB C0430XS1	300
	1"	68	58	FP C0680XS1	300
	1-1/4"	48	41	SB D0480XS1	300
	1-1/4"	125	108	FP D1250XS1	150
	1-1/2"	84	72	SB E0840XS1	150
	1-1/2"	177	153	FP E1770XS1	300
T Series 2 Way Valve Assembly	2"	108	93	SB F1080XS1	150
	2"	389	336	FP F3890XS1	150
	2-1/2"	503	435	FP G5030XS1	75
	3"	370	320	SB H3700XS1	75

Models 3-Way NPT

B Series 3 Way Valve Assembly	Size	Cv	Kv	Valve Model Prefix	Close off pc
	1/2"	5	4	ST A0048XS1	100
	3/4"	12	10	ST B0120XS1	100
T Series 3 Way Valve	1"	14	12	ST C0140XS1	300
	1-1/4"	21	18	ST D0210XS1	300
	1-1/2"	34	29	ST E0340XS1	150
T Series 3 Way Valve Assembly	2"	47	40	ST F0470XS1	75

** All dimensions are in Inches*

Globe Valves

Neptronic's globe valves are available in 2 and 3-way configurations 1/2 in. to 2 in. NPT and 2.5 in. to 6 in. Flange.

2 and 3-way NPT valves are designed to be used with ΔT , AM, T and R series actuators, depending on the close-off requirements.

2 and 3-way Flange valves are designed to be used with T-R and MM series actuators depending on the close-off requirements.

These valves offer On/Off, floating and modulating control signals according to your needs. They are perfect for applications where pressure and temperature tolerance are key.



Main Features

- Temperature range 40°F (4°C) to 281°F (138°C)
- Steam temperature 230°F (100°C) maximum
- Hot or chilled water, 50% glycol
- 15 PSI low-pressure steam
- Body bronze body stainless steel stem, brass ball ANSI Class 125
- 2-Way 1/2 in. to 2 in. are equal percentage NPT (AT, AM Actuators)
- 3-Way 1/2 in. to 2 in. are linear NPT (AT, AM Actuators)
- 2- Way 2.5-3 in. and 4 in. Cast Iron, Flange ANSI Class 125 (TM, RM Actuators)
- 3- Way 2.5-3 in. and 4 in. Cast Iron, Flange ANSI Class 125 TM, RM Actuators
- 2- Way 4-5 in. and 6 in. Cast Iron, Flange ANSI Class 125 MM Actuators
- 3- Way 4-5 in. and 6 in. Cast Iron, Flange ANSI Class 125 MM actuators

Applications

- Hot and chilled water
- Low-pressure steam
- Heating and cooling coils
- Boilers

Models 2-Way NPT

Compatible with our A actuators.

Size	Cv	Kv	3-Way Valve Models	Close off psi
1/2"	0.4	0.3	GS A0004YB1	250
1/2"	1.3	1.1	GS A0013YB1	250
1/2"	2.2	1.9	GS A0022YB1	250
1/2"	4.4	3.8	GS A0044YB1	250
3/4"	5.5	4.7	GS B0055YB1	180
3/4"	7.5	6.4	GS B0075YB1	180
1"	10	8	GS C0100YB1	100
1"	14	12	GS C0140YB1	100
1-1/4"	20	17	GS D0200YB1	65
1-1/4"	28	24	GS E0280YB1	45
2"	40	34	GS F0400YB1	25

Models 3 Way Mixing NPT

Size	Cv	Kv	3-Way Valve Models	Close off psi
1/2"	2.2	1.9	GM A0022YB1	250
1/2"	4.4	3.8	GM A0044YB1	250
3/4"	7.5	6.4	GM B0075YB1	180
1"	14	12	GM C0140YB1	100
1-1/4"	20	17	GM D0200YB1	65
1-1/2"	28	24	GM E0280YB1	45
2"	41	35	GM F0410YB1	25

Models 2-Way Flange

Valve Size	Cv	Kv	2-Way Valve Models	CLOSE OFF PSI	
				Actuator Series	
				T	R
2-1/2"	56	48	GS G0560WB4	54	108
3"	85	73	GS H0850WB4	37	80
4"	145	125	GS J1450WB4	-	32

Valve Size	Cv	Kv	2-Way Valve Models	CLOSE OFF PSI
4"	145	125	GS J1450WB4	110
5"	235	203	GS K2350WB4	80
6"	350	302	GS L3500WB4	50

Models 3-Way Mixing Flange

Valve Size	Cv	Kv	2-Way Valve Models	Close off psi	
				Actuator Series	
				T	R
2-1/2"	74	64	GM G0740WB4	54	108
3"	101	87	GM H1010WB4	37	80
4"	170	147	GM J1700WB4	-	32

Valve Size	Cv	Kv	3-Way Valve Models	CLOSE OFF PSI
4"	170	147	GM J1700WB4	110
5"	290	250	GM K2900WB4	80
6"	390	337	GM L3900WB4	50

Butterfly Valve

Neptronic's resilient seated butterfly valves are available in 2-way and 3-way configurations. These valves are compatible with our T, R and U actuators with or without electronic fail safe. They are also offered with On/Off, floating and modulating control signals. Because they are built with adequate materials to fit your application, industrial NEMA 4 actuators with integrated heaters can also accompany our butterfly valves.



Main Features

- High purity peroxide cured EPDM seat
- Nylon 11 coated ductile iron disc
- Double D connection
- Seat tongue and grove
- Butterfly valves are NSF-rated
- Available from sizes 2-12 in.
- Cast iron ASTM A128 class B
- Teflon main bearings
- Stainless steel ring and stem
- Asbestos-free gasket

**** In low pressure applications, actuators must be shielded from heat generated by the valve. An adapter kit, the DDSTM is available separately and is factory-installed.**

Applications

- Chilled water
- Hot water
- Condenser water
- Cooling towers

Models 2-Way: Equal Percentage

Models	Inches	Cv Range	Kv Range	CLOSE OFF PSI
BF F1650WA5	2	165	142	200
BF G2500WA5	2.5	250	216	200
BF H3800WA5	3	380	328	200
BF J6500WA5	4	650	562	200
BF K1K10WA5	5	1100	951	150
BF L1K79WA5	6	1790	1548	100
BF M3K30WA5	8	3300	2854	200
BF N4K82WA5	10	4820	4169	150
BF P6K20WA5	12	6200	5363	100

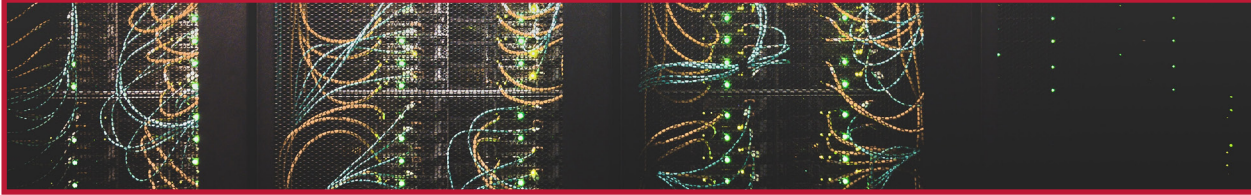
Models 3-Way: 2 x 2-Way with a TEE

Models	Inches	Cv Range	Kv Range	CLOSE OFF PSI
BT F0520WA5	2	52	44	200
BT G1040WA5	2.5	104	89	200
BT H1340WA5	3	134	115	200
BT J2100WA5	4	210	181	200
BT K3300WA5	5	330	285	150
BT L4600WA5	6	460	397	100
BT M8100WA5	8	810	700	200
BT M8100WA5	10	1180	1020	150
BT P1K52WA5	12	1520	1314	100

**** For valves sizes over 8 in., U actuators or industrial NEMA 4 actuators are used.**

Other Valves Applications

Data Centers



Institutional and School Facilities



Hospitals and Healthcare Facilities



Hospitals and Healthcare Facilities





MANUFACTURER OF



HVAC CONTROLS



ELECTRIC ACTUATORS



ACTUATED VALVES



HUMIDIFIERS



ELECTRIC HEATERS



neptronic.com