

SKE4 RESISTIVE STEAM HUMIDIFIER



neptronic®
www.neptronic.com

SKE4 RESISTIVE STEAM HUMIDIFIER

The resistive heating elements of the SKE4 convert electrical energy to heat energy that is then transmitted to the surrounding water, raising the temperature to its boiling point, creating steam. The process allows mineral-free, odorless, sterile steam to be generated quickly with any water condition.

Advantages

The SKE4 humidifier generates mineral free, odorless, sterile steam without the replacement cost associated with electrode cylinders.

- Capacities from 6-270 lb/hr (2.7-122 kg/hr)
- Compartmentalized enclosure separates the plumbing, controls, and high-voltage sections
- Remove the stainless steel evaporation chamber quickly without tools (the heating elements and the steam hose remain fixed)
- Patent-pending water level detection system using 2 sensor technologies
- Patented Anti-Foaming Energy Conservation (AFEC) System
- Available with BACnet MS/TP or Modbus communication interface
- Optional ethernet module for BACnet IP or Modbus IP, and Web services
- Independent scheduling system for unit operation and drain cycle

Evaporation Chamber

Evaporate water, not money!

The Neptronic SKE4 humidifier includes a permanent, lightweight and reusable stainless steel chamber instead of a disposable plastic bottle that must be replaced at least once a year, resulting in thousands of dollars of savings. These savings will more than pay for the initial cost of the humidifier.



No tools required



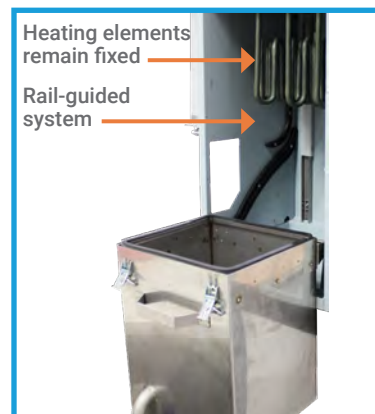
No heavy lifting required



Disconnect the water inlet



Disengage the 2 clamps



Drop down evaporation chamber with rail-guided system

System Overview

Patent-Pending Water Level Detection System

- Self-cleaning and self-calibrating sensors
- Utilizes 2 different sensor technologies
- Precise and reliable water level detection
- Anti-Foaming Energy Conservation (AFEC) System: drains water when foam is detected

*All Silicone Piping

- No copper piping
- Resistant to higher water temperatures
- Suitable for all water types including DI and RO (Consult factory for Ultrapure water)

* Alternate piping available

Manual Drain

- Functions even without power

Quick Connect Water Inlet

- No tools required

SD Card

- Event history log
- Firmware upgrade

SSR with External Heat Sink

- No cooling fan required
- Reduces noise level

Ethernet Module (optional)

- BACnet IP or Modbus IP
- Local and remote web services

BACnet MS/TP and Modbus Module (optional)

Disconnect switch

Integrated, Multi-Platform Controller

The SKE4 controller is configured specifically for your SKE4 Steam Humidifier.

- User-friendly, menu-driven interface on a 128 x 64 LCD with 8 function buttons for faster configuration and operation
- User rights management system allows for menu to display only functions available to the type of user logged in: End User, Service Technician, Installer or Integrator
- Quick Config menu allows for faster and easier installation, by displaying only the most commonly used functions and configurations
- Independent scheduling system for unit operation and drain cycle configurable via the menu or the BACnet communication interface
- In-field firmware upgradeable via SD card, USB or BACnet
- Simple viewing and exporting of trending log and alarm log

Optional features:

- The selectable BACnet MS/TP or Modbus menus allow access to over 75 objects/ registers for integration with a BMS and IoT (Internet of Things)
- Ethernet module
- BACnet IP or Modbus IP
- Web services make it possible to perform humidifier configurations, remote diagnostics and many more functions from any location



Options

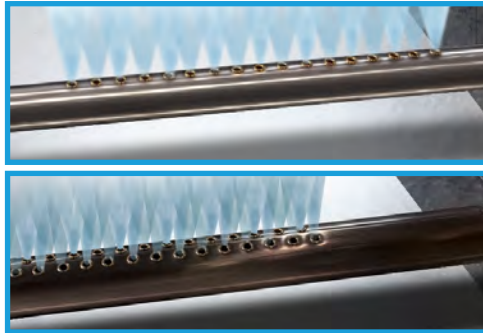
Steam Distribution Systems

For duct distribution installation, the SKE4 requires either a Multi-Steam, S.A.M. or S.A.M.E2 as a steam distribution system to disperse steam.

For fan distribution installation, the SKE4 can supply steam directly with an SDU (Steam distribution unit) into the room without a duct network or for a localized area.



For absorption distance of less than 3' (914mm)



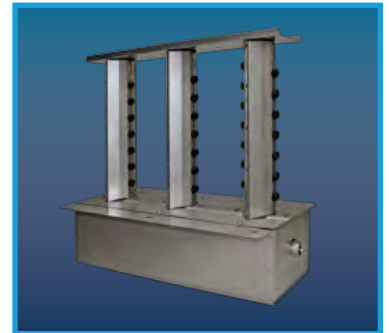
For absorption distance of less than 5' (1500mm)



For Models SKE4-N02 to SKE4-N30

X-Stream™ Technology

- High efficiency insulated steam distributor (channel and header) with patent pending steam ejector eyelets
- Double wall 304 stainless steel with encapsulated Armacell UT/ Solaflex™ foam insulation
- Specially engineered silicone eyelets prevent condensate ejection on start up and any modulating humidity demand
- Significant reduction in wasted energy
- Reduces airstream heat gain and generated condensate



Multi-Steam™ HD

Outdoor Enclosure

- Fully insulated and constructed from heavy duty steel
- Stainless steel bottom drip pan
- Zinc primer and polyurethane powder coating for resistance against scratches and corrosion on the exterior and interior surfaces
- Built-in anti-freeze and overheat protection
- Easy Installation on a roof curb or stand
- Connection can be made from side or bottom of unit for flexibility in any configuration



Specifications

Output and Power Consumption

Model	Steam	Consumption									Steam Output		
	Capacity lb/hr [kg/hr]	Power (kW)	Amperage								Qty	Diameter inches [mm]	Space Distribution Unit (SDU)
SKE4-N02	6 [2.7]	2	17	8.5	10	-	4.5	-	3.5	-	1	1 3/8 [35]	SDU4-1
SKE4-N04	12 [5.5]	4	-	17	19	11.5	8.5	5	7	4	1	1 3/8 [35]	SDU4-1
SKE4-N06	18 [8]	6	-	26	30	16.5	13	7.2	10.5	6	1	1 3/8 [35]	SDU4-1
SKE4-N10	30 [14]	10	-	-	-	28	-	12	-	10	1	1 3/8 [35]	SDU4-2
SKE4-N14	40 [19]	13.5	-	-	-	38	-	16.5	-	13.5	1	1 3/8 [35]	SDU4-2
SKE4-N16	48 [21.8]	16	-	-	-	45	-	-	-	16	1	2 1/8 [54]	SDU4-2
SKE4-N20	60 [28]	20	-	-	-	-	-	25	-	20	1	2 1/8 [54]	SDU4-3
SKE4-N30	90 [41]	30	-	-	-	-	-	36	-	30	1	2 1/8 [54]	SDU4-3
SKE4-N20 L	60 [28]	20	-	-	-	56	-	-	-	-	1	3 [76]	-
SKE4-N40	120 [56]	40	-	-	-	-	-	50	-	40	1	3 [76]	-
SKE4-N50	150 [68]	50	-	-	-	-	-	60	-	50	1	3 [76]	-
SKE4-N60	180 [82]	60	-	-	-	-	-	72	-	60	1	3 [76]	-
SKE4-N30X	90 [41]	30	-	-	-	83.4	-	-	-	-	1	3 [76]	-
SKE4-N40X	120 [56]	40	-	-	-	111	-	-	-	-	1	3 [76]	-
SKE4-N70	210 [95]	70	-	-	-	-	-	84	-	70	1	3 [76]	-
SKE4-N80	240 [108]	80	-	-	-	-	-	96	-	81	2	3 [76]	-
SKE4-N90	270 [122]	90	-	-	-	-	-	109	-	91	2	3 [76]	-

Note: Designate the letter M for modulating units (i.e.: SKE4-N20M)

SKE4 Series



OSHPD
Office of Statewide Health
Planning and Development



SKE4-N02
SKE4-N04
SKE4-N06



SKE4-N10
SKE4-N14
SKE4-N16
SKE4-N20
SKE4-N30



SKE4-N20L
SKE4-N40
SKE4-N50
SKE4-N60



SKE4-N30X
SKE4-N40X
SKE4-N70
SKE4-N80
SKE4-N90

Specify your SKE4 online

Humidifier System Design and Specification Web Application

Ready to specify your Humidifier? Neptronic has developed a web application that saves you time when sizing and specifying Neptronic commercial, industrial or residential humidifiers.



Features

- Automatic humidification load calculation
- Web based
- Selection specific report generator
- Only options related to your selections appear
- Manage users, clients, job sites and humidifier specs
- History log

Project	Humidifier	Dispersion	Options	Reports	Pricing
Type <input checked="" type="radio"/> Isothermal (Hot Steam) <input type="radio"/> Adiabatic (cold mist)					
Category <input checked="" type="radio"/> Commercial Electric <input type="radio"/> Commercial Gas <input type="radio"/> Residential Electric <input type="radio"/> Steam to Steam <input type="radio"/> Direct Steam					
Entering Air Conditions Temperature <input type="text"/> °C Relative Humidity <input type="text"/> %		Indoor Conditions Temperature <input type="text"/> 21 °C Relative Humidity <input type="text"/> 40 %		Distribution <input checked="" type="radio"/> In Duct <input type="radio"/> In Space	
Ventilation System <input type="radio"/> Natural <input checked="" type="radio"/> Mechanical <input type="radio"/> Economizer Total Air Flow <input type="text"/> 7500 m³/hr Outside Air <input type="text"/> 100 %					
Humidifier(s) <input type="checkbox"/> Enter Load Manually Calculated Load <input type="text"/> 53.51 kg/hr Total Capacity <input type="text"/> 60.00 kg/hr Select Model					

Easy to Use

Go to neptronic.com, select Humidisoft and log in. Enter design requirements and Humidisoft automatically calculates the humidification load and adjusts available options based on your selections. When done, print a complete schedule, CSI and/or submittal report at the click of a button.

Project	Humidifier	Dispersion	Options	Reports	Pricing
Flexible Steam Hose 54 mm <input type="text"/> 4 m <input checked="" type="checkbox"/> Straight Hump Silicone Hose SF 4501-55					
Drain Cooler <input checked="" type="checkbox"/> IDC Internal Drain Cooler (standard feature) <input type="checkbox"/> External Drain Cooler (thermostatic valve)					
Other Options <input checked="" type="checkbox"/> BACnet (MS/TP) Network Capability <input type="checkbox"/> Humidifier Weather Enclosure (W)					

Humidifier Product Line



Electric



SKE4

- Capacities from 6 - 270 lb/hr
- Remove chamber easily, without tools
- Outdoor unit available

Gas Fired



SKG4

- Capacities from 110 - 810 lb/hr
- Modular design
- Outdoor unit available

Steam to Steam



SKS4

- Capacities from 33 - 1250 lb/hr
- Scale management system for easy maintenance
- Insulated external panels

Residential



SKR

- Capacities from 4.5 - 12 lb/hr
- Permanent cleanable chamber
- Reliable siphon drain

High Pressure Atomizer



SKH

- Capacities up to 4638 lb/hr
- Up to 10 zones
- Installation in-duct or in-space

Evaporative



SKV

- Free cooling up to 22°F (12°C)
- Custom design to fit your application
- Hygienic operation with silver ion dosing system

Direct Steam



SKD

- Capacities from 7 - 1157lb/hr
- Jacketed or Multi-Steam™ SD/HD
- Unique electronic steam controller
- Optional pressurized condensate return (PCR) system

Steam Distribution



Distribution

- Multi-Steam™ SD/HD distribution
- S.A.M. & S.A.M.E2 wands
- SDU (Space distribution unit)

Humidity Controls



Controls

- Humidity controls/sensors
- Safety controls
- BACnet compatible

MANUFACTURER OF ■

- HVAC CONTROLS
- ELECTRIC ACTUATORS
- ACTUATED VALVES
- HUMIDIFIERS
- ELECTRIC HEATERS

■
www.neptronic.com