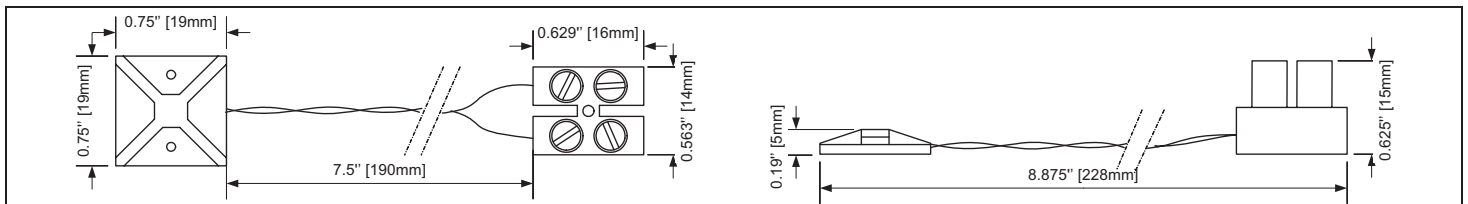
**Feature:**

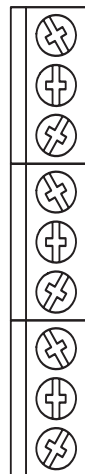
- Temperature sensor
- Self adhesive to stick on window.
- To be installed in association with Neptronic® room (HRO20) humidistat

SHW0-11

Technical Data	SHW0-11
Electrical connection	2 twisted wires AWG28, length 7.5" [19mm], connected to 2 poles terminal.
Signal	Variable resistance
Rating	-40°F to 176°F [-40°C to 80°C]
Ambient temperature	-40°F to 176°F [-40°C to 80°C]
Storage temperature	-40°F to 176°F [-40°C to 80°C]
Relative Humidity	5 to 95 % non condensing.
Weight	0.01lb [5g]

Dimensions**Wiring Diagrams****Connection to HRO20**

HRO20 terminal



SHW0-11 terminal

